

SpaceEx GeoFusion



Capture the World in Every Dimension

SpaceEx GeoFusion

SLAM + RTK Hybrid
Measuring System

Ultra-High Sampling Efficiency

200,000 Points/Second

Wide Measuring Range

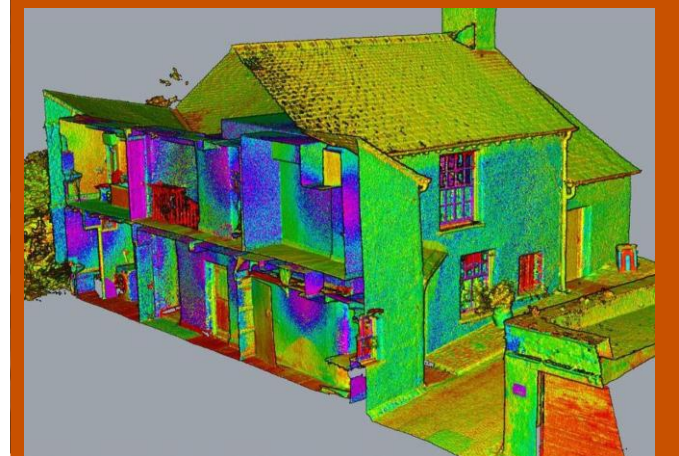
10% In Reflectivity Scene

Measuring Range 0.1m-40 m

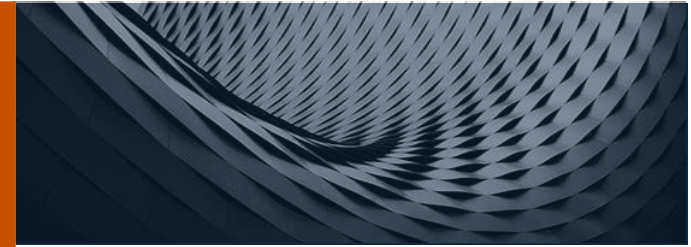
80% In Reflectivity Scene

Measuring Range 0.1m- 70m

JANAK



SpaceEx GeoFusion brings together advanced GNSS accuracy and modern SLAM capabilities to overcome the limitations of conventional RTK surveying. It performs seamlessly across challenging environments—be it indoors, beneath dense canopies, or within complex urban spaces—delivering consistent and dependable results. With its ability to adapt to diverse conditions, GeoFusion enhances productivity and flexibility, setting a new standard for efficient field measurements.



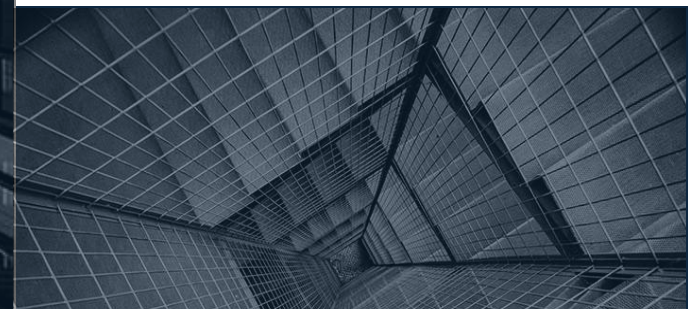
HDR True-Color

Point Clouds Meet AR Navigation

48 MP Panoramic Lens 360°

All-Round Imaging

5 MP Visual Layout Camera



SpaceEx GeoFusion RTK

SLAM + RTK Hybrid Measuring System

Specifications-

Channels	1408 All in View
Signal Tracking	GPS, GLONASS, BeiDou, Galileo, QZSS, SBAS
Operating Time	2Hrs in SLAM, > 10 hrs in RTK
Battery Capacity	14.4 V, 47.5Wh Li ion
Operating Temperature	-20°C + 50°C
Connection Mode	Wifi (802.11 b/g/n), Bluetooth & Type C USB
RTK Module	Supported

SLAM

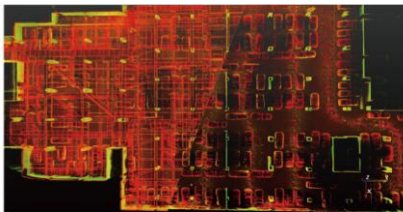
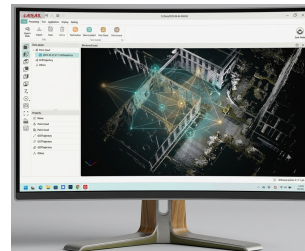
Relative Accuracy	<2cm
Absolute Accuracy	< 5cm
Relative Accuracy	1cm
Working Range	<ul style="list-style-type: none"> ■ 40 m @ 10% reflectivity, ■ 70 m @ 80% reflectivity
Scan Mode	Mobile
Scan Speed	200,000 points/s
Laser Class	Class1/905nm
LiDAR Channels	40
LiDAR FOV	360°*-7~+52°

Camera

Number of Cameras	2*48 MP & 1
Field of View	190° * 190°
AR Camera	1* 5 MP

Others

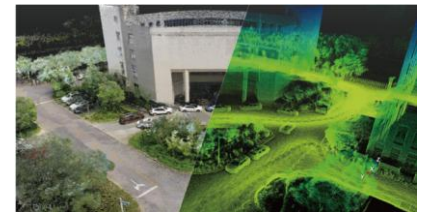
Memory	256 GB Expandable up to 512GB
Material	Magnesium alloy
Internal Radio	1.5 Watt
Point Cloud Format	LAS
Color Point Cloud	Supported
Storage	512GB



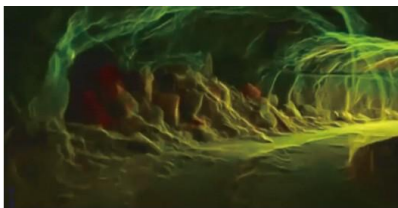
Utility Surveying



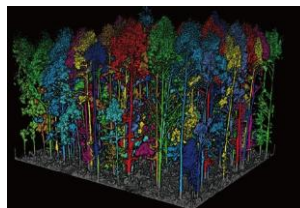
Urban Areas



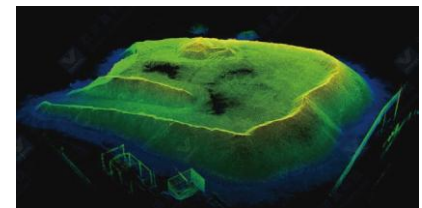
Architecture and Planning



Mine & Tunnel Mapping



Forestry Survey



Volume calculation